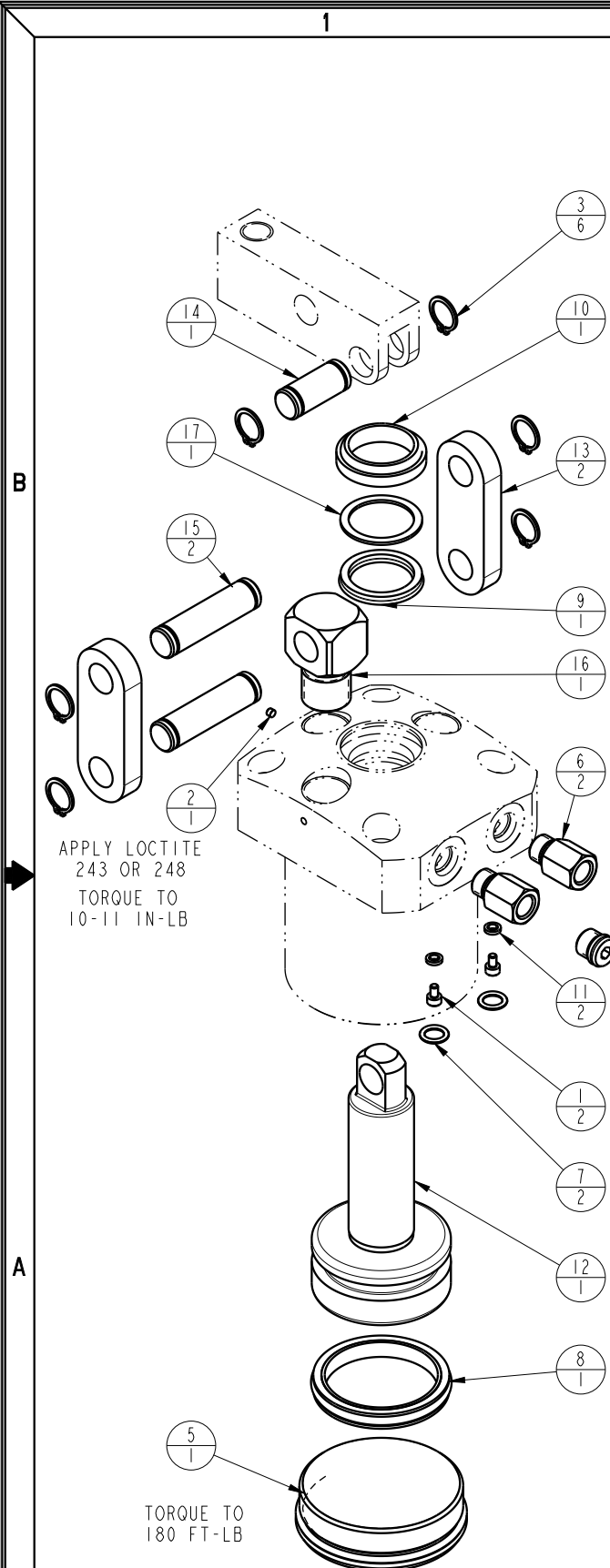


NO	QTY	PART NO	DESCRIPTION	STD SEAL KIT
1	2	21500018	SCREW, CAP, SOCH, M3 X 5, ALY	
2	1	21500314	SCREW, SET, CONE PT, M3 X .5-6g X 3	
3	6	23050023	RING, RTNG, EXT, 0.500	X
4	2	30601144	PLUG, SOCH, SAE 4	
5	1	30670007	PLUG, SAE 32, FKM	X
6	2	30801442	ADAPTER, MALE SAE 4 - FEM 1/8 NPT	
7	2	39051025	O-RING, (-011)	X
8	1	39052033	SEAL, T, (1 3/4X9/32X2 1/8)	X
9	1	39052034	SEAL, U-CUP, 1 x 1/8 x 1 1/4	X
10	1	39053029	WIPER, SNAP-IN, (1)	X
11	2	39055011	SEAL, BONDED, M3	
12	1	81600091	PLUNGER, LC, LPRESS, 2200/10 KN, DA	
13	2	81600097	LINK, LC, LPRESS, 2200/10 KN	
14	1	81600100	PIN, LC, SHORT, LPRESS, 2200/10 KN	
15	2	81600103	PIN, LC, LONG, LPRESS, 2200/10 KN	
16	1	81600106	PIVOT, LC, LPRESS, 2200/10 KN	
17	1	39F54007	BU RING, (-214)	X
N/A	N/A	60160219	KIT, SEAL, LC, PNEU, 2 1/8	NOTED



APPLY LOCTITE 243 OR 248


APPLY LOCTITE 243 OR 248
TORQUE TO 10-11 IN-LB

TORQUE TO 10-11 IN-LB

TORQUE TO 180 FT-LB



APPLY LUBRICANT TO ALL SEALS PRIOR TO ASSEMBLY.

PARTS LIST	 VEKTEK, INC. 1334 E. SIXTH AVE. P.O. BOX 625 EMPORIA, KS. 66801 U.S.A.	
	ASSEMBLIES AFFECTED	PARTS LIST, PNEU, 2 1/8, DA
	P1662210 P1662211 P1662212	SIZE A PPL1662 REV C

C	5637	RELEASE	BDC	3/4/25
REV	IN ACCORDANCE WITH ECN	EFFECTIVE DATE	REVISED BY	DATE
DRW BY: G. ROMINE	DRAWING STATUS: Released			
DATE: 6-04-07	PRODUCTION APPROVED FOR RELEASED STATUS ONLY			